



TECHNOPATH
CLINICAL DIAGNOSTICS

QUALITY CONTROLS FOR OPTIMAL PATIENT CARE



YOUR QUALITY CONTROL SOFTWARE

A background image showing a man and a woman in a lab setting looking at a laptop. The image is overlaid with a complex digital pattern of glowing blue lines, nodes, and floating numbers (4, 5, 6, 7, 8, 9) in a light blue color, creating a high-tech, data-driven atmosphere.

DAILY

CONTENTS

IAMQC Introduction	3
Work Flow	4
Technopath Products	5
Daily	6
Connectivity	9
Benefits	10

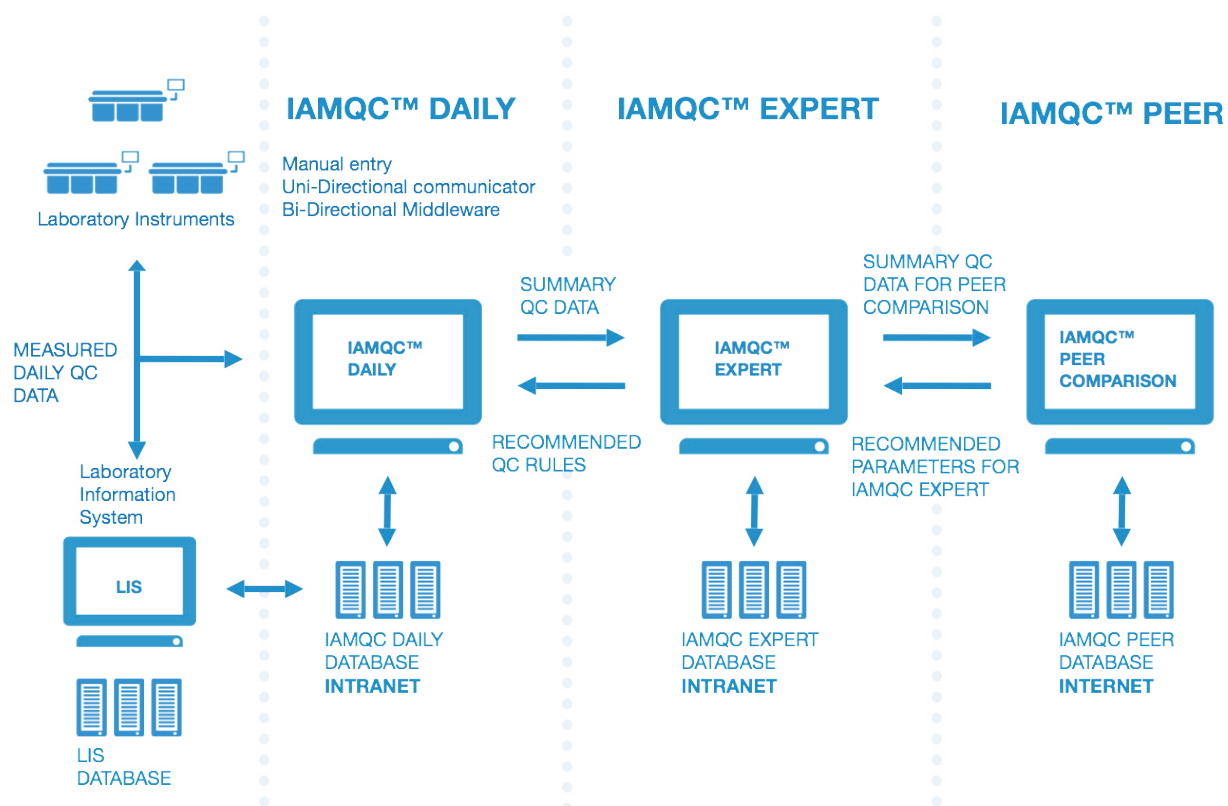




Designed to complement and support TECHNOPATH's Multichem™ Quality Control (QC) product range, IAMQC™ Software provides Laboratory Managers and Technologists with a range of QC software tools to analyse their QC results in real-time.

IAMQC™ Software products allow users to automate, centralise, standardise and improve QC processes in a laboratory setting. Our combination of modules satisfy the varying levels of QC requirements in individual laboratories and are easily tailored to meet different QC management expectations.

TECHNOPATH's full suite of software products provide clinical laboratories significant cost and time savings, whilst delivering higher confidence in analytical testing methods. Choose from Intranet and/or Internet based statistical quality control and quality assurance software products. IAMQC™ software products are practical, graphical, user-definable and easy to use.





TECHNOPATH
CLINICAL DIAGNOSTICS

TECHNOPATH'S SOFTWARE PRODUCTS HELP:

BENCH TECHNOLOGISTS:

- Spend less time on false positive QC flags
- Concentrate on tests, which require their attention
- Spend less time trouble-shooting
- Know how to react when the mean shifts
- Assess the acceptability of new reagent lots and calibrations
- Solve QC problems
- Gain understanding and confidence in the QC process

LAB MANAGERS:

- Choose QC rules to maximise true rejects and minimise false rejects
- Quickly see the tests that require their attention
- Skim graphics to quickly review current or historical data by lab, department, instrument or test
- Monitor performance in groups of laboratories
- Review problem tests and QA activities in local and remote labs

LAB OR HOSPITAL ADMINISTRATORS:

- Save money
- Improve quality
- Improve service
- Review Administrative Summary Reports to ensure quality performance



TECHNOPATH
CLINICAL DIAGNOSTICS
QUALITY CONTROLS FOR OPTIMAL PATIENT CARE

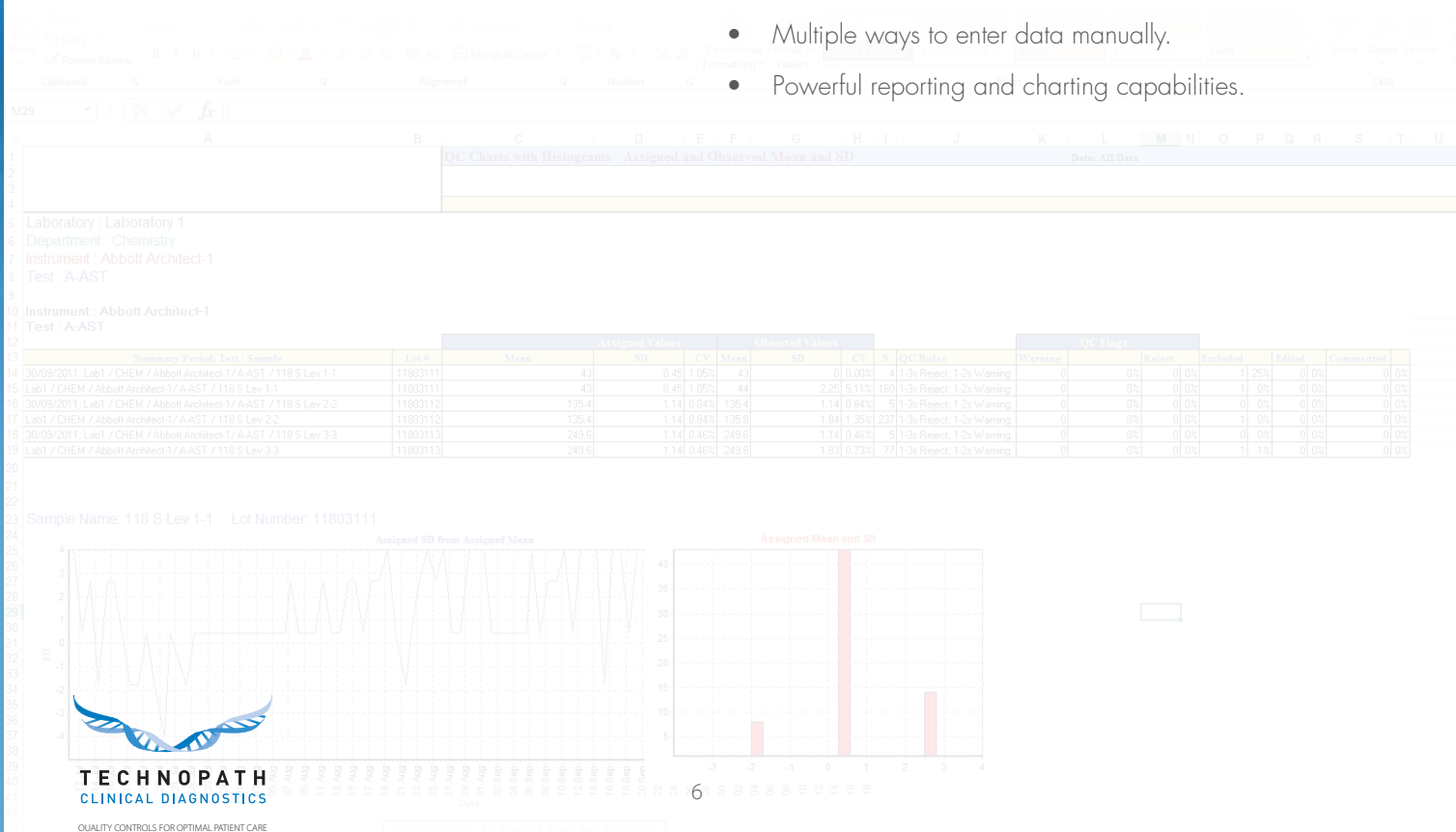
DAILY

IAMQC™ Daily is a comprehensive Internal Quality Control software that applies Westgard and/or any user-defined QC rules to individual QC results. The software automatically builds interactive Levey-Jennings charts and tables and provides summary and detailed customised reports to the end user. IAMQC™ Daily integrates with Microsoft Excel to produce customised electronic reports. The system also allows the import of pre-defined templates, resulting in instant system setups. Users can create audit trails, action logs and summary reports at the click of a button.

IAMQC™ Daily comprises a centralised program that facilitates the analysis of multiple QC materials, across numerous departments in a laboratory setting. The system can be configured to submit approved results automatically to IAMQC™ Peer via our proprietary driver solutions. This will help to satisfy both Internal and External QC requirements.

KEY FEATURES

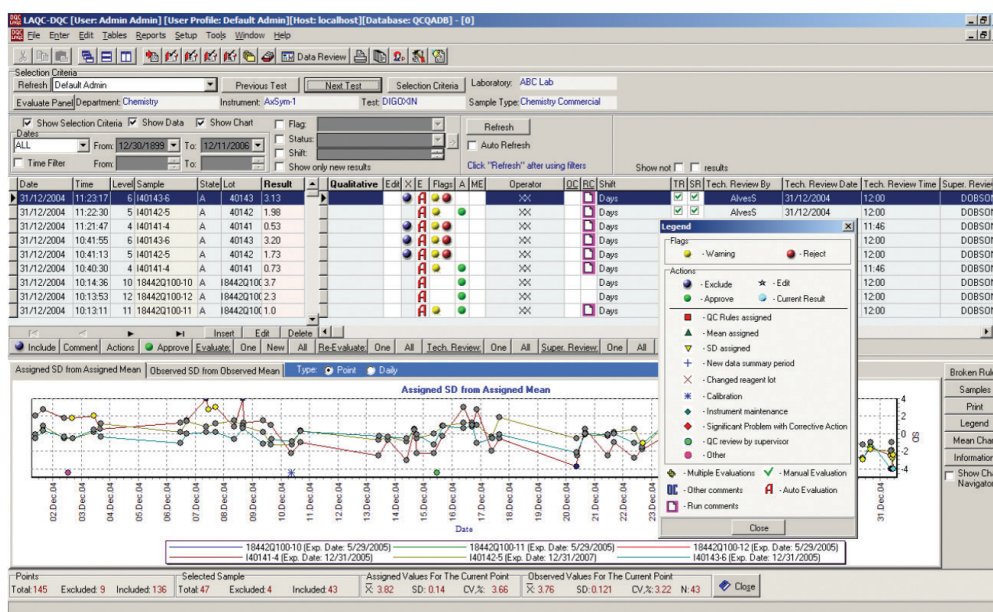
- Works with multiple Sites, Departments, Instruments, Tests and Levels.
- Applies Westgard and/or any user-defined QC rules.
- Works with both quantitative and qualitative results.
- Focused troubleshooting for failed QC results via the system Action Log.
- Technologist and Supervisor Reviews and sign-off capabilities.
- Automatic Reverse Levels function.
- QC management at different administrative levels.
- Works on a single PC, LAN, WAN, and/or over the Internet.
- Runs on a powerful Database Management System to support large volumes of data in real time.
- Advanced functions for fast and easy setup.
- Multiple ways to enter data manually.
- Powerful reporting and charting capabilities.



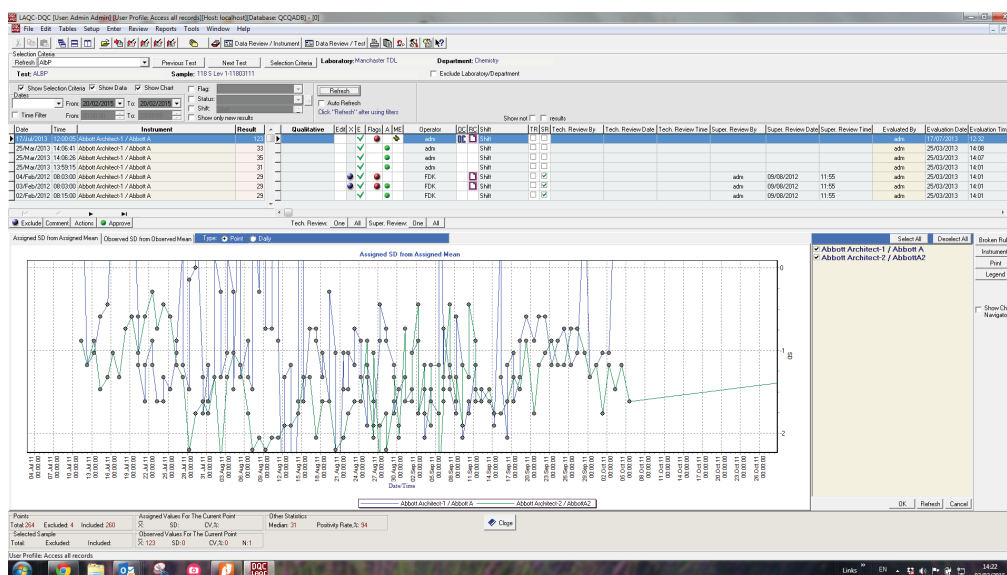
IAMQC™ Daily offers a centralised review of all QC data from all laboratories/instruments. Central administrator access facilitates managers to review QC performance at multiple facilities – no need to visit each laboratory site. Closer monitoring of QC from remote

locations without additional costs provides a flexible option for managing the inter and intra-lab performance. The software works on an 'open' platform that allows the end user to add all types of control material from a range of laboratories.

DAILY



Interactive Data Review Screen



Super Impose Instruments

Both IAMQC™ Daily and Expert can run using an internet OR intranet connection. Each PC license allows the user to manage an unlimited number of departments, control materials (not limited to Technopath materials) and instruments. An unlimited number of user logins can be added to the system at any stage. An administrator

module can also manage user logins, customising the functionality that is available to each user. All data can also be filtered using the same logic to apply a user-friendly atmosphere and save time scrolling through data.

QC Strategy [QC Rule Set]

Assigned to Observed Mean and SD | Assign Mean and SD | QC Rule Set | Sample Stat

Rule Set Description

- N=2 Set 1 Level 1 Error Detection
- N=2 Set 2 Level 2 Error Detection
- N=2 Set 3 Level 3 Error Detection
- N=2 Set 4 Level 4 Error Detection
- N=3 Set 1 Level 1 Error Detection
- N=3 Set 2 Level 2 Error Detection
- N=3 Set 3 Level 3 Error Detection
- N=3 Set 4 Level 4 Error Detection
- Westgard Original**
- Hematology Patient Repeat
- 1-3s Reject; 1-2s Warning
- Greater than 20% from mean

Rule Name | Rule Type Description

- 1-2s** | Flags values > or < "x" SD from the mean
- 1-3s | Flags values > or < "x" SD from the mean
- 2-2s | Flags values > or < "x" SD from the mean

Rule Comments

The 1-2s rule is broken when a single point is > 2 SD from the mean. It is often used as a warn

Custom Rule Sets

QC Charts with Histograms - Assigned and Observed Mean and SD

Date: All Data

Sample Name	Lot Number	Assigned Values	Observed Values	QC Rules	Warning	Reject	Excluded	Edited	Comment
118 S Lev 1-1	11803111	Mean: 43, SD: 0.45, CV: 1.05%	Mean: 43, SD: 0.45, CV: 1.05%	41-3s Reject: 1-2s Warning	0	0	0	0	0
118 S Lev 1-1	11803111	Mean: 43, SD: 0.45, CV: 1.05%	Mean: 44, SD: 0.45, CV: 1.05%	41-3s Reject: 1-2s Warning	0	0	0	0	0
118 S Lev 1-1	11803111	Mean: 135.4, SD: 1.14, CV: 0.84%	Mean: 136.6, SD: 1.14, CV: 0.84%	51-3s Reject: 1-2s Warning	0	0	0	0	0
118 S Lev 1-1	11803111	Mean: 135.4, SD: 1.14, CV: 0.84%	Mean: 136.6, SD: 1.14, CV: 0.84%	51-3s Reject: 1-2s Warning	0	0	0	0	0
118 S Lev 1-1	11803111	Mean: 249.6, SD: 1.14, CV: 0.46%	Mean: 249.6, SD: 1.14, CV: 0.46%	51-3s Reject: 1-2s Warning	0	0	0	0	0
118 S Lev 1-1	11803111	Mean: 249.6, SD: 1.14, CV: 0.46%	Mean: 249.6, SD: 1.14, CV: 0.46%	51-3s Reject: 1-2s Warning	0	0	0	0	0

Sample Name: 118 S Lev 1-1 Lot Number: 11803111

Assigned SD from Assigned Mean

Assigned Mean and SD

Customisable Reports in Microsoft Excel

CONNECTIVITY

Providing the flexibility for an internet OR intranet connection facilitates the customer in choosing their preference with regards to connectivity. The system can run locally behind a firewall, or alternatively, over the web should access be required outside of the local network.

Built-in real-time and semi-real time interface solutions are available to capture data from all types of instruments,

middleware systems and LIS across all departments. To date, we have developed over 200 types of drivers for data capturing purposes. IAMQC™ Daily can also capture QC results from diagnostic instruments that are not interfaced to the DMS and from manual result entry programs on a daily basis. IAMQC™ Drivers include, but are not limited to, the following list:

Abbott Architect	Dawning UC	RCM Beziers
Abbott AXSYM	EPIC LIS SDF 1.0	Roche COBAS
Abbott CELL DYN	ERMA	Roche ELECSYS
ABX	Fletcher Flora	Roche HITACHI 747
AVL OMNI 5	HMS LIS	Roche Integra 4.1.ARC
Bayer Atlas	Hutt No 2 QC	Roche Modular
Bayer CLINITEK	IL ELECTRA 1000	Roche PSM
Beckman AU	IL Synthesis	RT Communicator
Beckman DxC	Immucor Galileo	Schuytlab LIS
Beckman DXI ACCESS 2	LabDaq LIS	Siemens ADVIA Centaur
Beckman Remisol	McKesson LIS	Siemens CentraLink
Beckman SYNCHRON CX9	Meditech LIS	Siemens Dimension 2.0
Cerner LIS	MGC 240 Qualitative 1.0	Siemens Immulite (DPC)
Cerner Millennium LIS	Microplate	Siemens Novius LIS
Citation LIS	Microscan	SOFT LIS
CLARIS LIS	MOLIS LIS	StaRRsed
Coag-A-Mate MTX II	Mysis LIS	Stat Profile M
ConcurTrak SDF	NEMO Middleware	Sunquest 1
CPSI LIS	NOVA ELECTROLYTE 5	SYSTEMX
Dade Behring BN II Nephelometer	NUCLEUS	TOSOH A1c 2.2
Dade Dimension	Omnilab AMS	UF100
Dairyland LIS	Orchard LIS	UriScan-S300
Data Innovations IM	Ortho Vitros ECi	Viper
Datalink	Quadrated LIS	RCM Beziers

BENEFITS

- ① **Centralised review** of all QC data from all laboratories/ instruments. Central administrator access to review QC performance at multiple facilities – no need to visit each laboratory site
- ② **Closer monitoring** of QC from remote locations without additional costs
- ③ **Built-in real-time and semi-real time interface solutions.** Integrate with various Laboratory Information Systems and/or instruments
- ④ **Capture QC results** from diagnostic instruments and manual result entry programs on a daily basis
- ⑤ Compare each result to **Assigned Mean & SD**
- ⑥ **Assess QC results** against a set mean and standard deviation using QC rules (Westgard and/or User-defined): single or multiple QC rules
- ⑦ Auto-approval protocol
- ⑧ Troubleshoot problematic daily QC
- ⑨ **Manage multiple Sites, Departments, Instruments, Tests and QC Levels on one central database**
- ⑩ **Manage both quantitative and qualitative results**
- ⑪ **Manage different departments** (Chemistry, Haematology, Microbiology, etc.) on one software system
- ⑫ **Focused troubleshooting** for failed QC results
- ⑬ **Technologist and Supervisor Reviews/Sign-off**
- ⑭ **"Reverse Levels"** automatic function
- ⑮ **QC management at different levels:** administrative and bench technologists
- ⑯ **Document all activities** regarding daily QC
- ⑰ **Tracking of proficiency testing performance and problem resolution**
- ⑱ **Documentation** of new reagent/calibrator/QC lot numbers and studies
- ⑲ **Monthly reporting on-line** for management
- ⑳ **Document activities and administrative comments** for summarized QC data
- ㉑ **Transfer detail and summary data** between a Laboratory and a single QC database in real time over the Internet
- ㉒ **Internal/External peer QC review capability.** Collect, analyse and compare individual laboratory data immediately with a world-wide peer group at the touch of a button over the Internet
- ㉓ **Works on a single PC, LAN, WAN, and over the Internet**
- ㉔ **Runs on a powerful Database Management System** to support large volumes of data in real time
- ㉕ **Multiple Assign and Advanced Setup/Copy functions** for fast and easy setup and ongoing maintenance
- ㉖ **Multiple ways to enter data manually** (by Level, Test or Instrument; one at a time or many at a time)
- ㉗ **Monthly Supervisor Review**
- ㉘ **Powerful reporting and charting capabilities.** Includes User-definable reports
- ㉙ **Multi-user environment**
- ㉚ **Audit trail/Admin module** for setting up users with different security profiles



TECHNOPATH
CLINICAL DIAGNOSTICS

Fort Henry Business Park, Ballina, Co. Tipperary, Ireland.
info@technopathCD.com www.technopathclinicaldiagnostics.com